

Canon



WORKGROUP SOLUTIONS



imageRUNNER®
2022/2018

WORKGROUP SOLUTIONS

INTRODUCING THE CANON imageRUNNER 2022/2018

RUN Smarter and More Productively.



 **imageRUNNER®**
2022 / 2018

With the Canon imageRUNNER 2022/2018 models, even smaller workgroups can afford the sophisticated document production features needed for success. These devices combine the smart multifunction capabilities that your business needs today while growing with you into the future through expandable functionality.

Capable of producing up to 1200 x 1200 dpi output at speeds of up to 22 and 18 pages per minute (letter), respectively, these compact yet powerful systems deliver the benefits of digital copying, network printing, color scanning, and optional fax features. Plus, flexible paper handling and finishing options can help you save time, space, and document production costs.

With the Canon imageRUNNER 2022/2018 devices, the ability to work smarter is well within your reach!

CANON imageRUNNER 2022/2018 DEVICES

The Ultimate in Workgroup Productivity.

INTELLIGENT COMMUNICATIONS AND PRINTING

Go beyond the features of basic single-function devices to empower users with the smart color scanning, network printing, and optional faxing capabilities of the Canon imageRUNNER 2022/2018 models.

POWERFUL ADMINISTRATION AND SECURITY

Even with their advanced features, these imageRUNNER models couldn't be easier to administer, with simplified tools for managing device access and helping to protect the security of your confidential information.

COMPACT DESIGN, UNCOMPROMISING PERFORMANCE

Sacrificing productivity for a compact design is unnecessary with the imageRUNNER 2022/2018 devices. These systems are powered by Canon's imageCHIP Lite architecture and offer you a choice of paper handling and finishing options to best suit your needs.

INTUITIVE OPERATION WITHOUT COMPLICATION

Whether a beginner or an advanced user, these Canon imageRUNNER devices are so easy to use and include electronic documentation to help facilitate operation.

Feature	imageRUNNER 2022/2018
Copy	Standard
Print	Standard (Canon UFR II LT) Optional (PCL)
Fax	Optional
Color Scanning	Standard
Document Feeder	Optional
Duplexing	Optional

DESIGNED WITH WORKGROUPS IN MIND

Compact Design, Uncompromising Performance.

SPACE-SAVING DESIGN

The imageRUNNER 2022/2018 models have a small footprint, so you can conserve valuable office space. This engineering achievement is accomplished through the short vertical paper path that can deliver fast first-print-out times of less than seven seconds and the Accelerated Paper Feeding Method for full productivity when printing duplexed documents.*

POWERFUL SYSTEM ARCHITECTURE

Built upon Canon's imageCHIP (Concurrent Hyper Intelligent Platform) Lite architecture, the imageRUNNER 2022/2018 devices have been designed with fast multifunction processing and full concurrency. The architecture includes a powerful processor and 128MB of RAM (expandable to 256MB) to provide the resources needed to simultaneously handle the workflows of multiple users while maintaining the rated speed.

The imageRUNNER 2022/2018 devices use Canon's RAPID Fusing System, which combines a durable film medium and a ceramic heater to quickly fuse toner to paper. The RAPID Fusing System delivers virtually zero waiting time between jobs for nonstop productivity, fast warm-up times, and reduced energy

consumption of three watts or less when in Standby mode. High-yielding supplies and consumables help keep operating costs and downtime to a minimum.

PAPER HANDLING AND FINISHING

The imageRUNNER 2022/2018 models come standard with paper capacities of 500 and 250 sheets, respectively, and an 80-sheet stack bypass tray. For greater capacity, additional cassette options can be added for a five-way feeding system of up to 1,080 sheets. Media sizes of up to 11" x 17" can be handled in all paper trays.

A 250-sheet internal output tray is standard on both models and provides collating, grouping, and rotating capabilities. Additional output capacity can be obtained with the Inner 2-Way Tray option, which adds a second 100-sheet output destination to the internal tray. An internal finisher option is also available. This can staple up to 50 sheets per set and collate, group, and offset up to 770 sheets of paper. For additional sorting capabilities, a second internal tray can be added to the internal finisher.



Paper Supply



Inner 2-Way-E1



Finisher-U2 with Additional Tray

* Duplex printing requires the optional Duplex Unit-B1.

INTELLIGENT SCANNING AND PRINTING

Enhance Your Digital World.

COLOR SCANNING

The imageRUNNER 2022/2018 models quickly create copies and electronic versions of your original documents. Individual pages can be easily scanned from the platen glass, or achieve higher productivity with the optional 50-sheet Duplexing Automatic Document Feeder for higher volumes of even double-sided originals. Documents up to 11" x 17" can be scanned in color or black and white at resolutions up to 600 x 600 dpi. These files then can be imported into TWAIN-compliant applications on the desktop through Canon's Color Network ScanGear software.



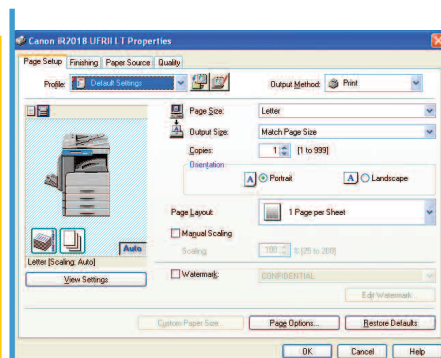
Duplexing Automatic Document Feeder

SUPER-FAST FAXING

When configured with the Super G3 Fax Boards and fax panel options, the imageRUNNER 2022/2018 devices can handle all your inbound and outbound faxing needs. Users have access to one-touch speed-dial keys, a high-capacity Address Book, and a host of memory features that expedite your work. Canon's fax driver also allows users to fax documents from their desktop computer for greater productivity.

NETWORK AND DIRECT PRINTING

With standard USB 2.0 and 10/100Base-TX Ethernet interfaces, the imageRUNNER 2022/2018 systems are easy-to-use network printers. Accessed through consistent and intuitively designed print drivers, each device can produce high-quality output at up to 1200 x 1200 dpi* with the UFR II LT print controller. General office environments that print Microsoft® Office documents will benefit from Canon's proprietary UFR II LT technology, which is optimized to facilitate high-speed printing by utilizing the user's desktop computer for data processing. Additional support for PCL 5e/6 Page Description Languages is available as an option. With support for IPv6, these devices are ready to meet your future network infrastructure requirements.



UFR II LT Print Driver

* UFR II LT only. Requires 256MB RAM.

POWERFUL ADMINISTRATION AND SECURITY

Achieve Complete Control.

USER AUTHENTICATION

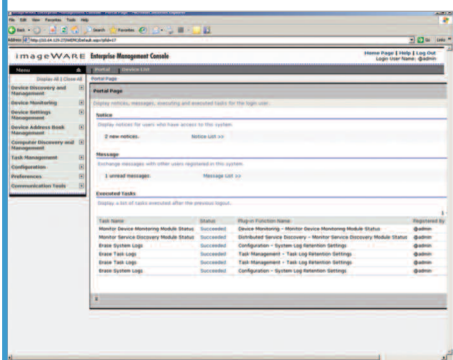
Administrators of imageRUNNER 2022/2018 devices can limit access to each function and enforce volume ceilings or output totals through Department ID mode, which supports up to 1,000 accounts. When Department ID mode is enabled, users must be authenticated on the device's control panel prior to operation. An optional Card Reader System helps to manage usage through the use of intelligent cards, granting users access after the correct card and password have been entered at the device.

DEVICE AND NETWORK SECURITY

The imageRUNNER 2022/2018 models include features to help you guard against unauthorized access to the device. These include the capabilities to disable individual network service ports, limit access to specific IP/MAC addresses and ranges, and disable usage of the USB port or access to the fax driver from the desktop. As an aid to preventing errors when sending faxes, administrators can specify that all fax numbers must be confirmed upon entry prior to transmission.

COMPREHENSIVE DEVICE MANAGEMENT

Whether you're supporting a single system or a fleet of networked devices, Canon's imageWARE Enterprise Management Console (EMC) simplifies and centralizes device installation and management through a Web browser.



imageWARE Enterprise Management Console



Card Reader System

USER-FRIENDLY

Intuitive Operation Without Complication.

EASY-TO-USE INTERFACE

The imageRUNNER 2022/2018 devices feature a control panel consisting of hard keys and an easy-to-read dual line LCD Display, both of which provide enhanced simplicity and usability in performing operations at the device. From the desktop, intuitively designed print drivers give point-and-click access to a range of image, paper, and finishing features.

Control Panel

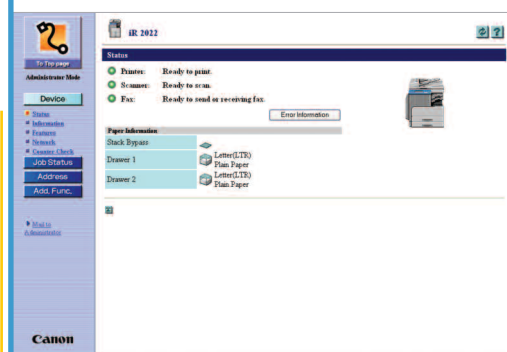


REMOTE ACCESS VIA THE WEB

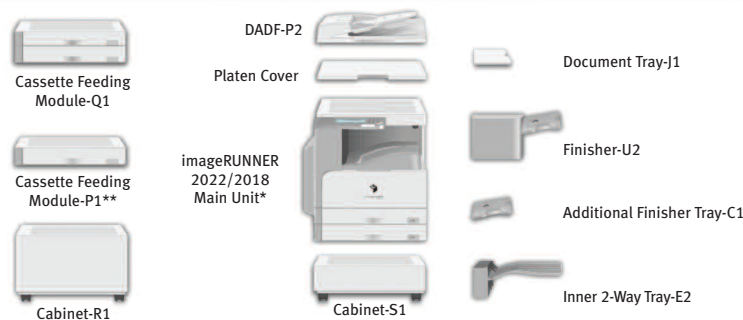
Canon's Remote UI (User Interface) utility provides the ability to access the imageRUNNER 2022/2018 devices through a Web browser from any computer on the network. From the utility, users can check the status of the device, track the progress of current jobs, monitor paper and toner levels, and administer the Address Book.

ELECTRONIC DOCUMENTATION

Regardless of your experience level, the functions of the Canon imageRUNNER 2022/2018 models are highly intuitive. An easy Operation Guide provides step-by-step instructions on how to operate the device's main functions. Documentation is CD-based and features search tools to find answers quickly and easily.



Remote UI



MAIN UNIT

Type:	Digital Multifunction Imaging System
Imaging System:	Laser Dry Electrostatic Transfer
Developing System:	Dry Single-Component Projection
Fixing System:	RAPID Fusing System
Image Server Memory (Std./Max.):	128MB/256MB RAM
First-Copy-Out Time:	6.9 Seconds from Platen Glass
Warm-Up Time:	One Second or Less from Sleep Mode [†] 14 Seconds or Less from Main Power Off [†]
Copy Speed/Print Speed	
2022:	Up to 22 ppm (Letter)
2018:	Up to 18 ppm (Letter)
Maximum Original Size:	11" x 17"
Maximum Copy Size:	11" x 17"
Minimum Copy Size:	3-3/4" x 5/7-8"
Acceptable Originals:	Sheets, Books, and 3-Dimensional Items (Up to 4-3/8 lb.)
Multiple Copies:	1 to 99
Maximum Copy Reservation:	Five jobs
Scan Resolution:	Up to 600 x 600 dpi
Copy Resolution (Enhanced):	Up to 1200 x 600 dpi
Print Resolution:	Up to 1200 x 1200 dpi ^{††}
Halftone:	256 Levels
Automatic Trayless Duplexing:	Optional
Magnification:	20% to 200% (In 1% Increments)
Preset Reduction:	50%, 64%, 73%, 78%
Preset Enlargement:	121%, 129%, 200%
Exposure Control:	Automatic or Manual (9 Levels)
Standard Paper Capacity	
2022:	2 x 250 + 80 Bypass (Total 580 Sheets)
2018:	1 x 250 + 80 Bypass (Total 330 Sheets)
Maximum Paper Capacity:	4 x 250 + 80 Bypass (Total 1,080 Sheets)
Acceptable Paper Weight:	17 lb. to 24 lb. Bond (Cassette) 17 lb. to 32 lb. Bond (Bypass)
Dimensions (H x W x D)	
2022:	29-3/4" x 24-1/2" x 26-5/8"
2018:	26-1/2" x 24-1/2" x 26-5/8"
Weight	
2022:	116 lb.
2018:	103 lb.
Power Requirements:	120V AC, 60Hz, 4.6A
Power Consumption:	1.425kW (Max.)
Toner Yield:	8,300 at 6% Coverage

Print Specifications

CPU:	Canon Customer Processor—Shared
Memory:	Shared with Main Unit 128MB RAM (Std.) 256MB RAM (Opt.)
PDL Support:	UFR II LT (Std.) PCL 5e/6 (Opt.)
Standard Interfaces:	10/100Base-TX (RJ-45) Hi-Speed USB 2.0
Multiple Copies:	1 to 999
Network Operating Systems:	Novell® NetWare® v.5.1, 6, 6.5 Windows® 98/Me/2000/XP/Windows Server 2003/Windows Vista®, Apple® Macintosh® OS X or Higher

OPTIONAL ACCESSORIES

Duplexing Automatic Document Feeder-P2

Paper Capacity:	50 Sheets (Letter, Letter-R, Statement)
Acceptable Original Size:	Statement to 11" x 17"
Acceptable Paper Weights:	10 lb. to 32 lb. Bond (One Sheet) 14 lb. to 28 lb. Bond (Multiple Sheets)
Document Scanning Speed:	20 Sheets/Minute (Letter, B/W)

Cassette Feeding Module-Q1

Paper Capacity:	2 x 250-Sheet Cassette
Acceptable Paper Size:	11 x 17", Legal, Letter, Letter-R, Statement
Acceptable Paper Weight:	17 lb. to 24 lb. Bond

Cassette Feeding Module-P1**

Paper Capacity:	1 x 250-Sheet Cassette
Acceptable Paper Size:	11" x 17", Legal, Letter, Letter-R, Statement
Acceptable Paper Weight:	17 lb. to 24 lb. Bond
Dimensions (H x W x D):	4-5/8" x 22-7/8" x 22-3/8"
Weight:	Approx. 13 lb.

Inner 2-Way Tray-E2

Number of Trays:	Two
Acceptable Paper Size:	Statement to 11" x 17"
Tray Capacity	
Upper Output Tray:	100 Sheets (Letter) 50 Sheets (Other Sizes) 250 Sheets (Letter)
Lower Output Tray:	100 Sheets (Other Sizes)

Finisher-U2

Number of Trays:	One (Second Tray Optional)
Tray Capacity	
Single Tray:	770 Sheets (Letter, Statement-R) 380 Sheets (Legal, Letter-R, 11" x 17")
With Additional Finisher Tray-C1:	200 Sheets Each Tray (Letter, Statement-R) 150 Sheets Each Tray (Legal, Letter-R, 11" x 17")
Staple Position/Size	
Top Left Corner:	11" x 17" (Landscape), Legal (Landscape), Letter, Letter-R
Top Right Corner:	11" x 17" (Portrait), Legal (Portrait)
Max. Stapling Capacity:	Up to 30 Sheets (All Sizes)
Attachable Accessories:	Optional Additional Finisher Tray-C1

Super G3 Fax Board-AA1

Applicable Line:	Public Switched Telephone Network (PSTN) Facsimile Network
Connection Lines:	One
Address Book:	500 Destinations
Sending Original Sizes:	Statement to 11" x 17"
Recording Printing Sizes:	Statement to 11" x 17"

Additional Supplies and Accessories

Additional Finisher Tray-C1	Document Tray-J1
Basic Card Set	Duplex Unit-B1
Braille Label Lit-A1	Power Supply Kit-Q1
Cabinet-R1 (Large)	Barcode Printing Kit-B1
Cabinet-S1 (Small)	FL Cassette-AF1
Card Reader Attachment-D1	Stamp Ink Cartridge-C1
Card Reader-E1	Staple Cartridge-J1
Copy Card Sets	GPR-18 Black Toner

* Standard configuration of imageRUNNER 2022 shown; the imageRUNNER 2018 ships standard with one paper cassette.

** Option for imageRUNNER 2018 only.

[†] At room temperature of 20°C/68°F

^{††} UFR II LT only. Requires 256MB RAM.

Canon
image*ANYWARE*

1-800-OK-CANON
www.usa.canon.com

As an ENERGY STAR® Partner, Canon U.S.A., Inc. has determined that these products meet the ENERGY STAR guidelines for energy efficiency. ENERGY STAR and the ENERGY STAR mark are registered U.S. marks. Novell and NetWare are registered trademarks of Novell Inc. in the United States and other countries. Windows and Windows Vista are registered trademarks of Microsoft Corporation in the United States and/or other countries. Apple and Macintosh are trademarks of Apple Computer, Inc. CANON, IMAGERUNNER, and the SUPER G3 and GENUINE logos are registered trademarks of Canon Inc. in the United States and may also be registered trademarks or trademarks in other countries. IMAGEANYWARE is a trademark of Canon. All referenced product names and other marks are trademarks of their respective owners. Machines shown with optional accessories. Specifications and availability subject to change without notice. ©2008 Canon U.S.A., Inc. All rights reserved.